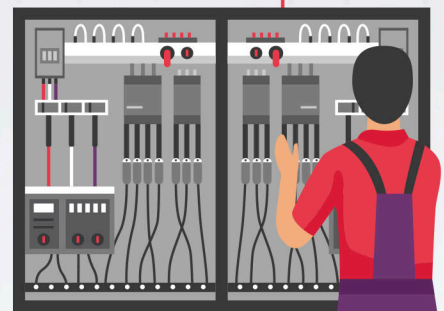
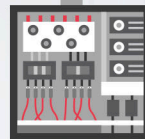


## SENSIBLE LOTO KITS (ELECTRICAL)



**A LOTO KIT  
FOR EVERY  
JOB**


















## LOTO ELECTRICAL KIT - MINI

## MODEL NO. LOKT-ELMN-102



SL. No.	Description	Image	Qty	SL. No.	Description	Image	Qty
1.	LOTO Mini Tote Bag. Color: Yellow. Brand: LOK-FORCE™. Size: 36 x 13 x 15 cms. Model No: BG-YW36MN		1 Pc.	14.	Circuit Breaker Locking Device, Lockouts 480/600 Volts MCCB's with toggle Width 41mm x 13.5mm Thickness. Thumbwheel Operation. Size: Medium, Color: Red. Brand: LOQ-IT. Model No: CB-KT-M		1 Pc.
2.	Hasp - Steel, PE Injection Molded Handles, Color: Red. Size: 25mm. Small, 6 locks capacity. Brand: LOTO-LOK®. Model No: HSP-PMH-25R		1 Pc.	15.	3-PTP (Three Point Traceability Padlock). Color: RED. SS304 Grade Regular Shackle 40mm. Body: Nylon PA66 Construction. Key Different (2 Unique Keys per Lock). Brand: LOTO-LOK®. Model No: 3PTPRKDR40		1 Pc.
3.	HASP, Aluminium Round Rod Scissor hasp. With Non-conductive Black coating and Injection Molded Nylon Handle. Size: 38 mm. (LARGE). Color: RED. Brand: LOTO-LOK®. Model No: HSP-AL-38		1 Pc.	16.	3-PTP (Three Point Traceability Padlock). Body: Nylon PA66 material. Shackle: Nylon PA66 extruded over SS304 DUAL PURPOSE (Electrical & Mechanical use), Non-Conductive (DUO 2in1), Rust, Shock & Weatherproof. Color: Red. Key Different (2 Unique Keys per Lock). Regular Shackle 40mm. Brand: LOTO-LOK®. Model No: 3PTPRKDN40		1 Pc.
4.	HASP – Nylon Body with 3.5mm Steel Shackle for small apertures. 4 Locks capacity. Color RED. Brand: LOTO-LOK®. Model No: HSP-TS3-4L		1 Pc.	17.	3-PTP (Three Point Traceability Padlock). Color: Yellow. SS304 Grade Regular Shackle 40mm. Body: Nylon PA66 Construction. Key Different (2 Unique Keys per Lock). Brand: LOTO-LOK®. Model No: 3PTPYKDR40		1 Pc.
5.	Circuit Breaker Locking Device, PIN-OUT for Single & Multipole MCB's. Color: Yellow. Brand: LOTO-LOK®. Model No: CB- PO-CTBL		3 Pcs.	18.	3-PTP (Three Point Traceability Padlock). Body: Nylon PA66 material. Shackle: Nylon PA66 extruded over SS304 DUAL PURPOSE (Electrical & Mechanical use), Non-Conductive (DUO 2in1), Rust, Shock & Weatherproof. Color: Red. Key Different (2 Unique Keys per Lock). Regular Shackle 40mm. Brand: LOTO-LOK®. Model No: 3PTPYKDN40		1 Pc.

SL. No.	Description	Image	Qty	SL. No.	Description	Image	Qty
6.	Circuit Breaker Locking Device for Single Pole Miniature Circuit Breaker. Color: Red. Opened and closed with screwdriver. Brand: LOTO-LOK®. Model No: CB-UB-CTBL		3 Pcs.	19.	" CAUTION, Equipment Locked Out, Do Not Operate " MAGNETIC SIGN. Size: 200mm x 100mm. Make: LOTO. Model No: LSP-MCS-01		1 Pc.
7.	Circuit Breaker Locking Device, PIN-OUT for Single & Multipole MCB's w/ LATCH. Color: Yellow. Brand: LOTO-LOK®. Model No: CB-POL-Y		3 Pcs.	20.	DANGER TAG, " DO NOT OPERATE ". Material: PVC. Size: L 143 mm x W 80 mm x 0.5 mm thk. Model No: S1 – TAGD – 01		5 Pcs.
8.	Circuit Breaker Locking Device for Single & Multi Pole MCB's & MCCB's. Opened and Closed with Screwdriver. Color: Yellow. Brand: LOTO-LOK®. Model No: CB-MG-CTBL		3 Pcs.	21.	DANGER TAG, " DO NOT OPERATE ". Material: PVC. Size: L 160 mm x W 80 mm x 0.5 mm thk. Model No: S1 – TAGD – 222		5 Pcs.
9.	Circuit Breaker Locking Device for Single and Multi Pole MCB's & MCCB's. Opened and Closed with Screwdriver. Color: Blue. Brand: LOTO-LOK®. Model No: CB-AB-CTBL		1 Pc.	22.	TAG, Yellow color. " OUT OF SERVICE, NOT TO BE OPERATED ". Material: PVC. Size: L 160 mm x W 80 mm x 0.5 mm thk. Model No: S1 – TAGC – 301		2 Pcs.
10.	Circuit Breaker / Fuse Lockout, Screwdriver Required, Color: Red. Model No: CB-FLRD		1 Pc.	23.	Screwdriver. Model No: TOOL-SCD		1 Pc.
11.	Circuit Breaker Locking Device, Universal type for Single & Multipole MCB's & MCCB's upto 200A, Hand Tightening, No- Tool. Color: Red. Brand: LOQ-IT. Model No: CB-UNI-HT		1 Pc.	24.	MARKER PEN. Color: Black. Model No: LSP-MARKER		1 Pc.
12.	Circuit Breaker Locking Device - Universal Type for Single & Multipole MCB's & MCCB's upto 200A with cover and 2 Way Padlocking slots. Color: Red. Model No: CB-COV94		1 Pc.	25.	Cable Ties, 8" Length for Tie Tags. Model No: LSP-CABLETIE		12 Pcs.
13.	Circuit Breaker Locking Device, Lockouts 277 Volts MCCB's with toggle Width 16mm x 11.5mm Thickness. Thumbwheel Operation. Size: Small, Color: Red. Brand: LOQ-IT. Model No: CB-KT-S		1 Pc.				