

Aladin

INDIVIDUAL VOLTAGE ALARM WITH HEADLAMP



360° DETECTION



**SMART MUTE
FEATURE**



**WIDE VOLTAGE RANGE
FROM 2 KV TO 400 KV**



COMPACT AND LIGHTWEIGHT

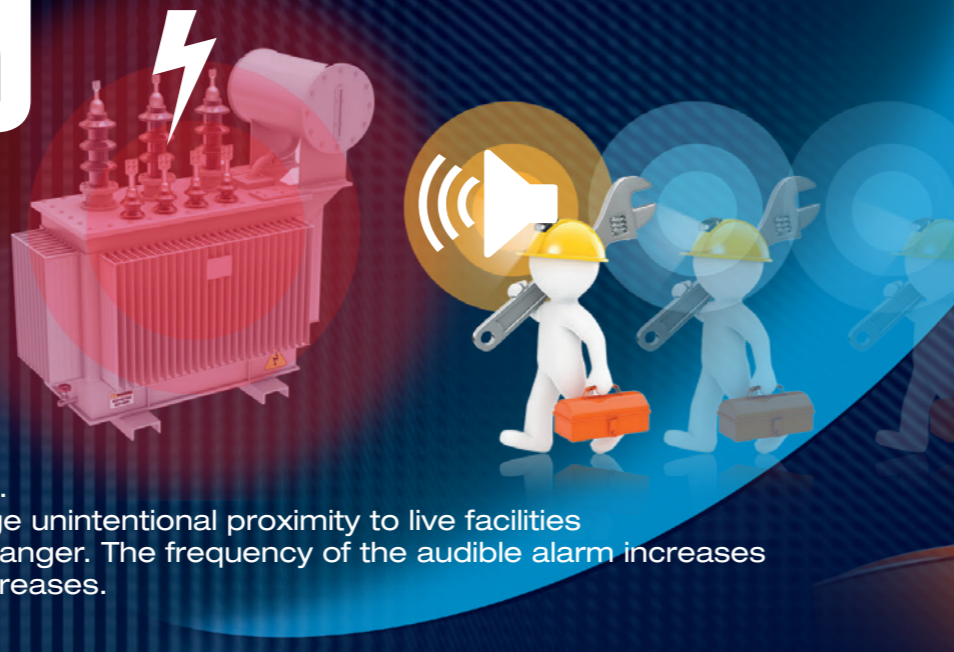
FAMECA

ESP
ELECTRICAL SAFETY PRODUCTS



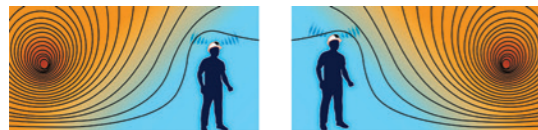
ALADIN IS A PERSONAL ELECTRIC FIELD DETECTOR COMBINED WITH A PROFESSIONAL HEADLAMP

It provides the wearer with an audible safety alarm if a high AC voltage level occurs. This makes it possible to manage unintentional proximity to live facilities by alerting the operator to the danger. The frequency of the audible alarm increases as the detected electric field increases.



ALADIN provides extra safety by alerting the operator as soon as they are close to a dangerous electric field, acting as additional identification of a work site close to live equipment with the smart alarm.

360° DETECTION AROUND THE WEARER



The ideal position of the detector on top of the protective helmet makes detection of an electric field equally effective, whether the field is in front of or behind the wearer.

SMART MUTE FEATURE SMART ALARM

The audible alarm alerts the operator as soon as they are close to a voltage source. On arrival at the work site, a personalized calibration of the voltage that triggers reactivation of the smart alarm may be obtained by pressing the Smart button.

The alarm then remains on silent watch as long as its readings are below this level and as soon as the measured voltage is higher than the defined level, the user is warned.

The closer is the voltage source, the shorter the reactivation distance will be.

PRACTICAL APPLICATIONS

The detector proves to be particularly useful in the following situations:

- Unintentional proximity: Quick movement backwards or forwards towards live facilities during an operation
- Unexpected return of voltage: Human or equipment error during a non-energized works operation
- Work area error: The operators believe they are working on non-energized facilities.

WIDE VOLTAGE DETECTION RANGE: FROM 2 KV TO 400 KV

ALADIN's wide voltage range from 2 kV to 400 kV makes it suitable for a great variety of electrical environments.

COMPACT AND LIGHTWEIGHT

FAMECA has used all its know-how to reduce the volume and weight of its detector.

ALADIN is lighter than most other headlamps with equivalent performance.

A PROFESSIONAL QUALITY MULTI-BEAM LAMP

ALADIN is equipped with an integrated high-performance LED headlamp and professional lenses for excellent light quality and will adapt to any requirements.

ALADIN is fitted with two light beams, suitable for all uses.

LONG RANGE BEAM

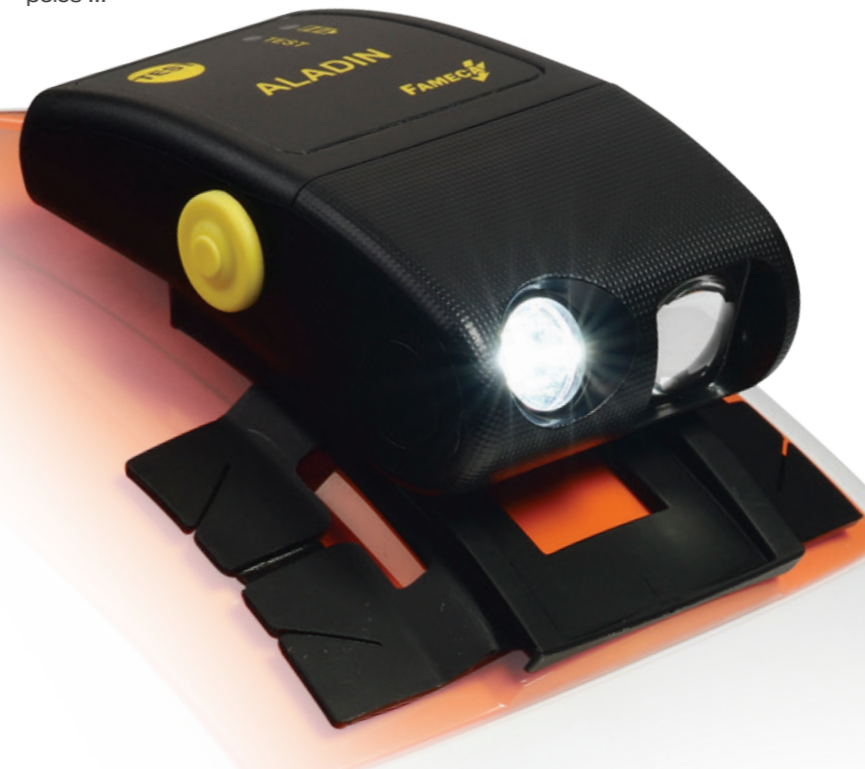


A focused or long-range beam to provide lighting at a distance: path, overhead lines or electrical poles ...

BROAD BEAM



A broad or close beam to light the immediate vicinity: work close at hand, movements, stairs.



ADJUSTABLE, 5-POSITION ANGLE

The lamp's angle is adjustable to 5 positions by moving the detector on its fixing plate.



UNIVERSAL FASTENING



ALADIN is adjustable to all models of protective helmet or cap and its fastening interface includes:

- A clip for fixing to a protective helmet that has a slot for a headlamp
- An adhesive pad system for fixing onto traditional helmets without this slot (several models available)
- An elastic strap with fixing hooks so that the detector may be worn with a protective cap.

NO INFLUENCE ON DETECTION

The detector is designed to combine the lighting function with the detection of electric fields and the integrated lamp has no effect at all on the detector's operation.

The ALADIN detector's use of the part of the helmet designed to accommodate a headlamp removes the need for the operator to use an additional light source, which could affect detection capacities.

| TYPE OF BEAM | Light intensity | Beam angle | Lighting distance | Autonomy |
|-----------------|-----------------|------------|-------------------|----------|
| LONG RANGE BEAM | 140 lumens | 11° | 20-30 m | 4 h |
| BROAD BEAM | HIGH STRENGTH | 65° | 10-15 m | 4 h |
| | MEDIUM STRENGTH | | 5-10 m | 25 h |
| | LOW STRENGTH | | < 3 m | 50 h |
| Vigilance | / | / | / | 80 h |



The detector acts as a complementary warning by alerting the operators when they are in presence of live equipments : maintenance works, rescue, painting, pruning, etc...



STANDARDS

Compliant with EC European Directives
EN 61000-6-2
EN 61000-6-4

TECHNICAL DESCRIPTION

- Detector operating range: 2 kV to 400 kV
- Reference detection distance: \approx 2 metres from a conductor located at a height of 1.5m at a voltage of 1 kV (live-earth)
- Detects the electric field level but does not measure the distance. The higher the voltage, the greater the distance at which it may be detected.
- Detection of a 50Hz and 60Hz electric field at 360° around the wearer
- Use for outside and indoor electrical equipment
- Detects Low Voltage on residential and commercial electrical sockets
- IP65 protection: protection against dust and water splashes
- Power supply: Lithium Polymer battery, rechargeable using a micro USB cable.

The standard version of detector ALADINCEFC is supplied in a cardboard box with a universal charger and micro USB cable, interface for fitting to a helmet, an elasticated band and four hooks, a reinforced protective case and Users' Instructions.



FIRST ALARM DISTANCE BEFORE SMART MUTE

| KV | Distance |
|----|----------|
| 1 | 2 m |
| 15 | 4,5 m |
| 20 | 5 m |
| 25 | 5,5 m |

Distances given as an indication, obtained in laboratory conditions using single voltage on a 2-metre bar at 1.5 metres from the ground

| Reference | Description | Users' instructions | Dimensions | Weight |
|---------------|--|---------------------|-----------------|--------|
| ALADINCEFC | Individual voltage alarm and headlamp | Pack F* | 87 x 60 x 34 mm | 98 g |
| ODINCEFC | Individual voltage alarm without headlamp | | | 88 g |
| ALADINBLECEFC | Individual voltage alarm and headlamp with Bluetooth feature | | | 98 g |
| ODINBLECEFC | Individual voltage alarm without headlamp with Bluetooth feature | | | 88 g |

* Pack F: FR/GB/DE/ES/PT/PL - Pack G: GB/GR/BG/IT/NL/AR/TR



BLUETOOTH OPTION

An application is being developed to transfer the voltage detection alert to a connected mobile device (smartphone or tablet). This applies to the ALADIN & ODIN models.

Availability: September 2018 for Android and at a later date for iOS.

BRALADIN18GB - Document not contractually binding. Errors and omissions excepted. Reproduction, even partial, is prohibited. Photo credits : Studio L'oeil Ecoute.



SFE International
815 B Chemin du Razas - ZI les Plaines
26780 Malataverne, France
Phone: +33 475 905 800
Fax: +33 475 905 839
E-mail: export@sf-electric.com
www.sf-electric.com

USA



Penta Electrical Safety Products
6047 Tyvola Glen Circle, Suite 206
Charlotte, NC 28217
Phone: 980.265.2612
Fax: 980.265.2668
Email: info@pentaesp.com
www.pentaesp.com