



LOTO SAFETY REQUISITES TRADING L.L.C.
Tel:+971-4-4539779 Fax:+971-4-4539778 DUBAI - UAE
E-mail:info@lotosafetyproducts.com

CALL US TODAY: +971-50-5843270
www.lotosafetyproducts.com

ARC FLASH 10 CAL TROUSER - NAVY BLUE

TARARC™

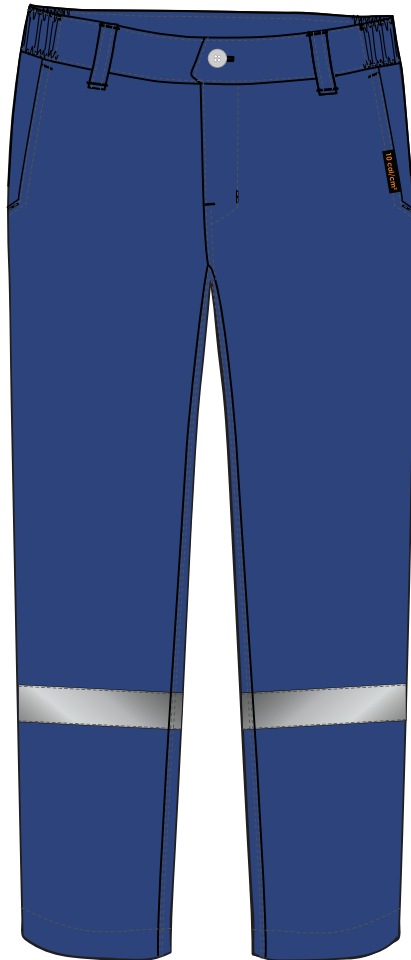
BLOCKTM RC
Series

Taracomfort CN240E

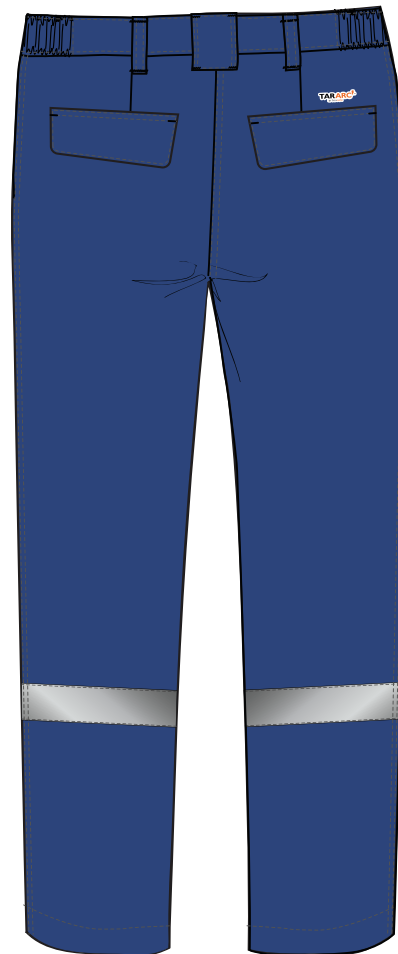
Fabric Weight : 240 GSM ($\pm 5\%$)

88% Cotton, 12% Nylon
Weave : 3/1 Twill

FRONT



BACK





LOTO SAFETY REQUISITES TRADING L.L.C.
Tel:+971-4-4539779 Fax:+971-4-4539778 DUBAI - UAE
E-mail:info@lotosafetyproducts.com

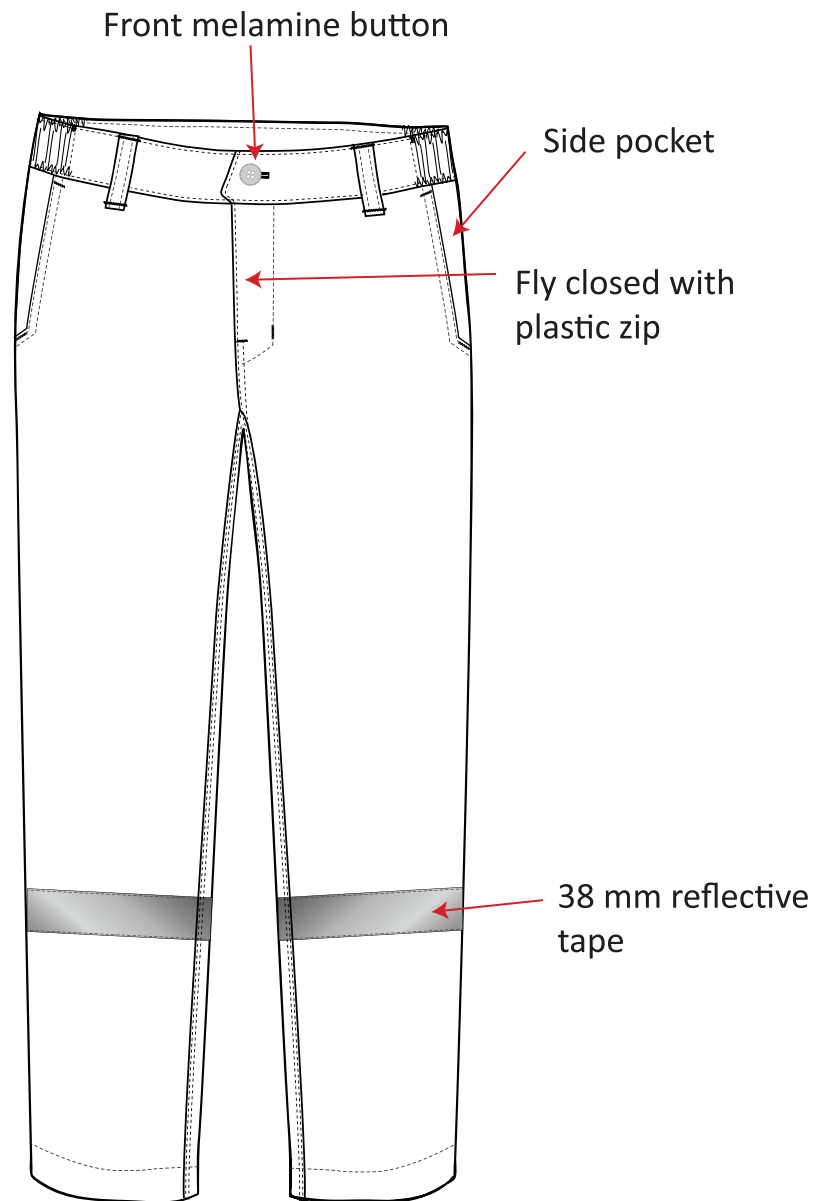
CALL US TODAY: +971-50-5843270
www.lotosafetyproducts.com

ARC FLASH 10 CAL TROUSER - NAVY BLUE

TARARC™

BLOCK RC™
Series

FRONT



ASTM
ASTM F1959

NFPA®
2112

NFPA®
70E

EN 13758-2
40+



LOTO SAFETY REQUISITES TRADING L.L.C.
Tel:+971-4-4539779 Fax:+971-4-4539778 DUBAI - UAE
E-mail:info@lotosafetyproducts.com

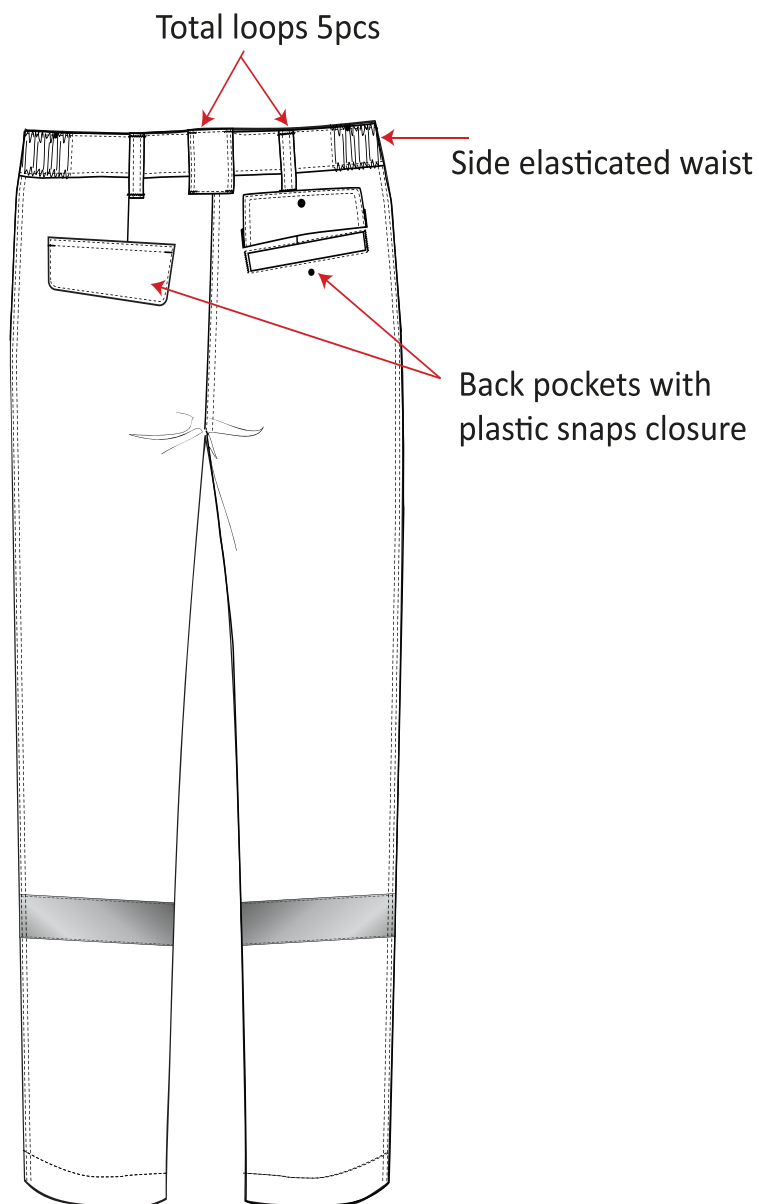
CALL US TODAY: +971-50-5843270
www.lotosafetyproducts.com

ARC FLASH 10 CAL TROUSER - NAVY BLUE

TARARC™

BLOKTM RC
Series

BACK



ASTM
ASTM F1959

NFPA®
2112

NFPA®
70E

EN 13758-2
40+



LOTO SAFETY REQUISITES TRADING L.L.C.
 Tel:+971-4-4539779 Fax:+971-4-4539778 DUBAI - UAE
 E-mail:info@lotosafetyproducts.com

CALL US TODAY: +971-50-5843270
www.lotosafetyproducts.com

ARC FLASH 10 CAL TROUSER - NAVY BLUE



MEASUREMENT CHART - CMS

SIZING: US/EU

TROUSERS Measurements (In CMS)									Spec Sheet-495			
POINT OF MEASUREMENT	24	26	28	30	32	34	36	38	40	42	44	46
WAIST - RELAXED	61.0	66.0	71.0	76.0	81.0	86.0	91.0	97.0	102.0	107.0	112.0	117.0
HIGH HIP - BELOW WB	76.0	81.0	86.0	91.0	97.0	102.0	107.0	112.0	117.0	122.0	127.0	132.0
LEG OPENING	36.0	37.0	39.0	40.0	41.0	43.0	44.0	45.0	46.0	47.0	48.0	48.0
INSEAM - FROM CROTCH POINT TO BOTTOM END	76.2	76.2	76.2	76.2	76.2	76.2	76.2	76.2	76.2	76.2	76.2	76.2
FRONT RISE - EXCLUDING WB	19.0	20.0	21.0	23.0	24.0	25.0	26.0	27.0	28.0	29.0	29.0	30.0
BACK RISE - EXCLUDING WB	30.0	31.0	32.0	33.0	35.0	36.0	37.0	38.0	38.0	39.0	40.0	40.0





LOTO SAFETY REQUISITES TRADING L.L.C.
 Tel:+971-4-4539779 Fax:+971-4-4539778 DUBAI - UAE
 E-mail:info@lotosafetyproducts.com

CALL US TODAY: +971-50-5843270
www.lotosafetyproducts.com

ARC FLASH 10 CAL TROUSER - NAVY BLUE



MEASUREMENT CHART - INCHES

SIZING: US/EU

TROUSERS Measurements (In Inches)									Spec Sheet-495			
POINT OF MEASUREMENT	24	26	28	30	32	34	36	38	40	42	44	46
WAIST - RELAXED	24.0	26.0	28.0	30.0	32.0	34.0	36.0	38.0	40.0	42.0	44.0	46.0
HIGH HIP - BELOW WB	30.0	32.0	34.0	36.0	38.0	40.0	42.0	44.0	46.0	48.0	50.0	52.0
LEG OPENING	14.3	14.8	15.3	15.8	16.3	16.8	17.3	17.8	18.3	18.5	18.8	19.0
INSEAM - FROM CROTCH POINT TO BOTTOM END	30.0	30.0	30.0	30.0	30.0	30.0	30.0	30.0	30.0	30.0	30.0	30.0
FRONT RISE - EXCLUDING WB	7.4	7.9	8.4	8.9	9.4	9.9	10.4	10.8	11.0	11.3	11.5	11.8
BACK RISE - EXCLUDING WB	11.6	12.1	12.6	13.1	13.6	14.1	14.6	14.8	15.1	15.4	15.6	15.9

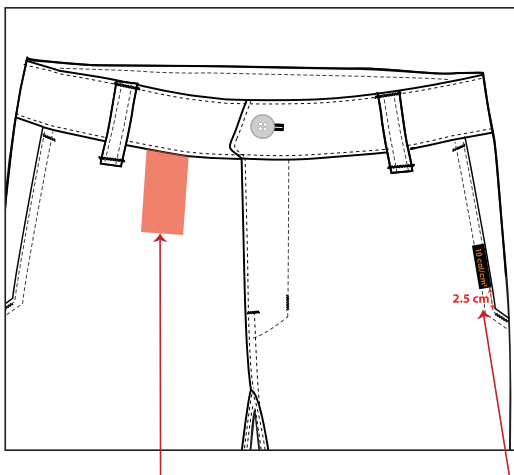




ARC FLASH 10 CAL TROUSER - NAVY BLUE



ARC FLASH 10 CAL TROUSER - LABEL



Main label (Changeable Size wise)
 Position - Right front waist inside

Cal label
 Position : Left side pocket

Size label
 Position : Back waist belt inside



Stitch Margin 10 mm

TARARC
 BY TARASAFE

Marketed By LOTO Safety Dubai (UAE)

BLOKARC-10FTR-30
 Taracomfort CN240E

HRC 2 Flame-Resistant
 ARC RATING : (ATPV) - 10 cal/cm²
 as per ASTM F1959

The fabric of this Flame Resistant garment meets the requirements of NFPA 2112-2018, standard on Flame-resistant Clothing for Protection of Industrial Personnel Against Short duration Thermal Exposures from Fire

NFPA 2112 **NFPA 70E**

40

Wash at 75°C.
 - Do not use detergents containing soap or chlorine.
 - Do not bleach, do not use acids when rinsing.
 - Iron at low setting.
 - Use dry cleaning agent other than Trichloroethylene.
 - Tumble dry allowed.

Care:
 - Do not iron on printed area.
 - Inspect garment before each use for damage or contaminants that impair protective qualities of the garment.
 - Failure to launder properly may affect the Flame Resistance of the garment.
 - Clean Garment thoroughly.

www.tarasafe.com

DO NOT REMOVE LABEL

Stitch Margin 10 mm

2"

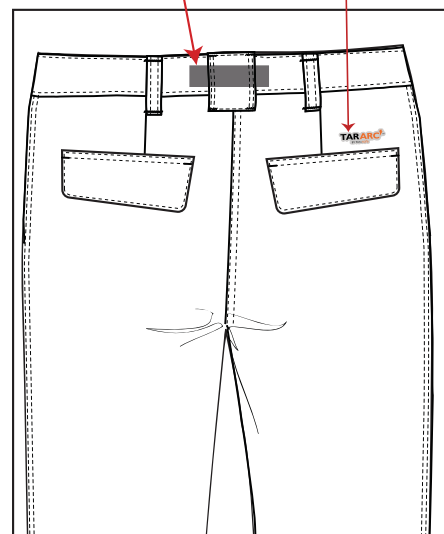


Warning label
 Position : Under the main label

WARNING

- This garment is not intended for fire fighting and will provide limited protection against chemical exposure.
- This garment is constructed from fabric that is self-extinguishing upon removal from a flame source.
- Flammable contaminants reduce the flame resistant properties.
- Wash garment to ensure that no greases, oily soils or other flammable contaminants are present when garment is worn.
- Repairs to the garment must be made with the same thread and fabric as in original.
- The user is responsible for determining that this garment is appropriate for the intended use and complies with the laws and regulatory standards.
- Do not reuse this product after an arc exposure.

Made in India





FABRIC SPECIFICATION SHEET



TARACOMFORT™ CN240E

HAZARD RISK CATEGORY 2

TaraComfort™ FR Cotton is TaraSafe's uncompromising commitment to wearer safety. It offers superior comfort and greater protective solutions. The Taracomfort textile engineering process imparts durable flame retardant properties to cotton and cotton rich fabrics.

DURABLE FR FINISH BREATHABILITY GOOD MOISTURE REGULATION THERMODYNAMICS NON-ALLERGIC & HARMLESS TO HUMAN SKIN

TECHNICAL CHARACTERISTICS

COMPOSITION	88% Cotton, 12% Nylon
WEAVE	3/1 Twill
FINISH	Durable Flame Retardant
WEIGHT	240 GSM (±5%)

PARAMETERS	STANDARD	WARP	WEFT
TENSILE STRENGTH	EN ISO 13934-1	600 N	300 N
TEAR STRENGTH	EN ISO 13937-2	18 N	18 N
DIMENSIONAL STABILITY	ISO 15797- Procedure 8 (Washing at 75°C- Tumble dry)	± 3%	± 3%
COLOR PERFORMANCE	ISO 105 C06	Grade 3 - 4	
CARE INSTRUCTION			

NORMS		PARAMETERS	
	NFPA 2112	Protection against Flash fire (Fabric testing only)	Met
	NFPA 70e	Protection for Electrical Safety - ASTM F 1959	ATPV: 10 cal/cm ²